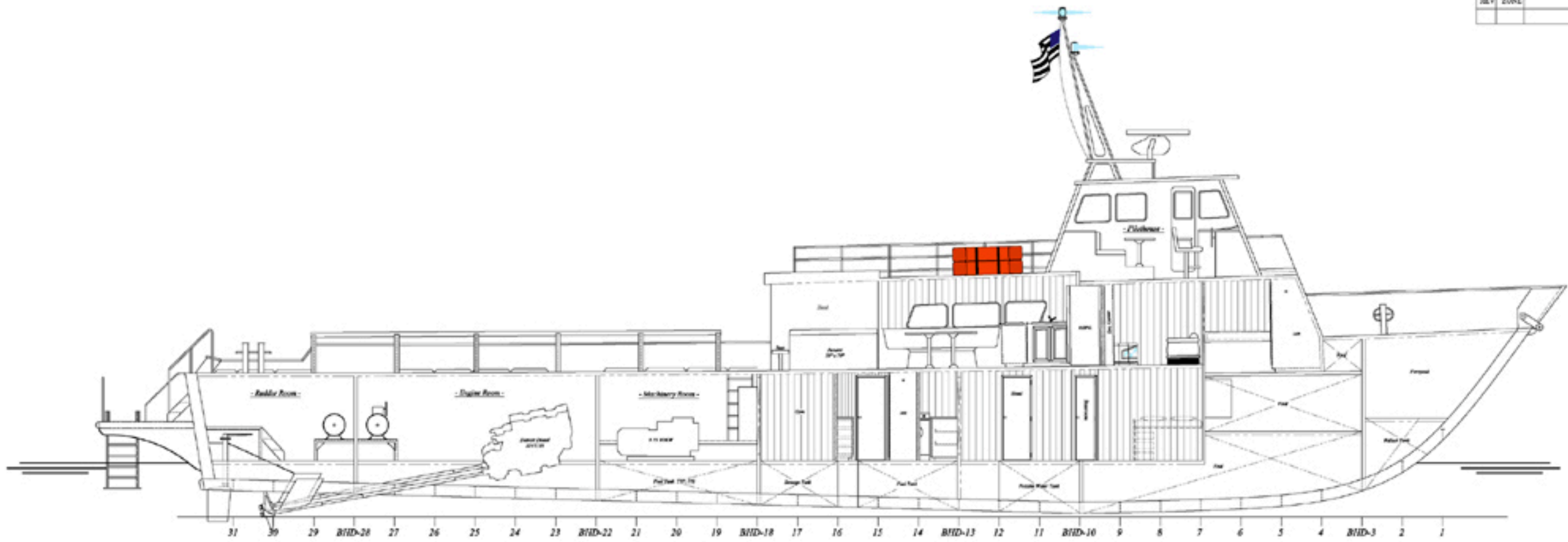


REVISIONS				
REV	ZONE	DESCRIPTION	DATE	BY / APP



- Inboard Profile -
1/4" = 1'-0"



- Below Deck Plan -
1/4" = 1'-0"

This drawing is the exclusive property of Seacraft Shipyard Corporation and is furnished on a confidential basis. No portion of this drawing may be copied, traced, photographed, or in any other way be reproduced, nor may any item herein be used or manufactured as shown without the written consent of Seacraft Shipyard Corporation. The recipient of this information contained herein may not disclose the same to any other person or business firm, nor may he use such information except for the specific purpose intended.

M/V MERLIN

Inboard Profile & Plan

SEACRAFT
SHIPYARD CORPORATION
Seacraft Corporation - Construction
P. O. BOX 14801800 Lake Palmdale Rd
Amelia, Louisiana 72603
Phone (501) 320-2820 Fax (501) 431-3513
E-Mail: seacraft@seacraftshipyard.com
Website: www.seacraftshipyard.com

JOB No: ---	SCALE: AS NOTED	DATE: 7/7/05	CHECKED:
TASK No: ---	DRAWN: HJW	DWG NO: IPP-100	
	APP'D:	SHEET 1 OF 1	REV ---